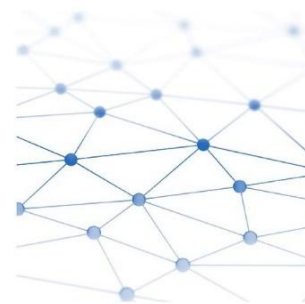
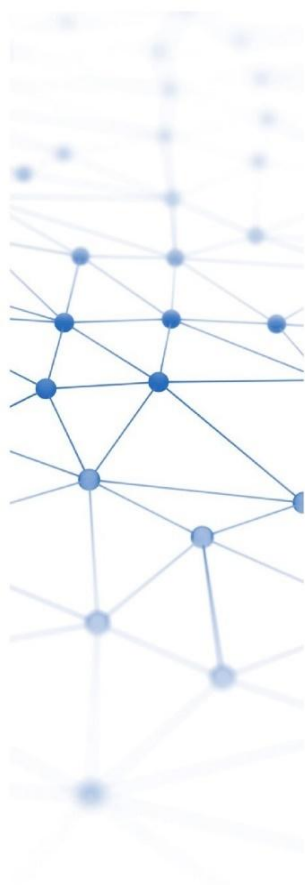


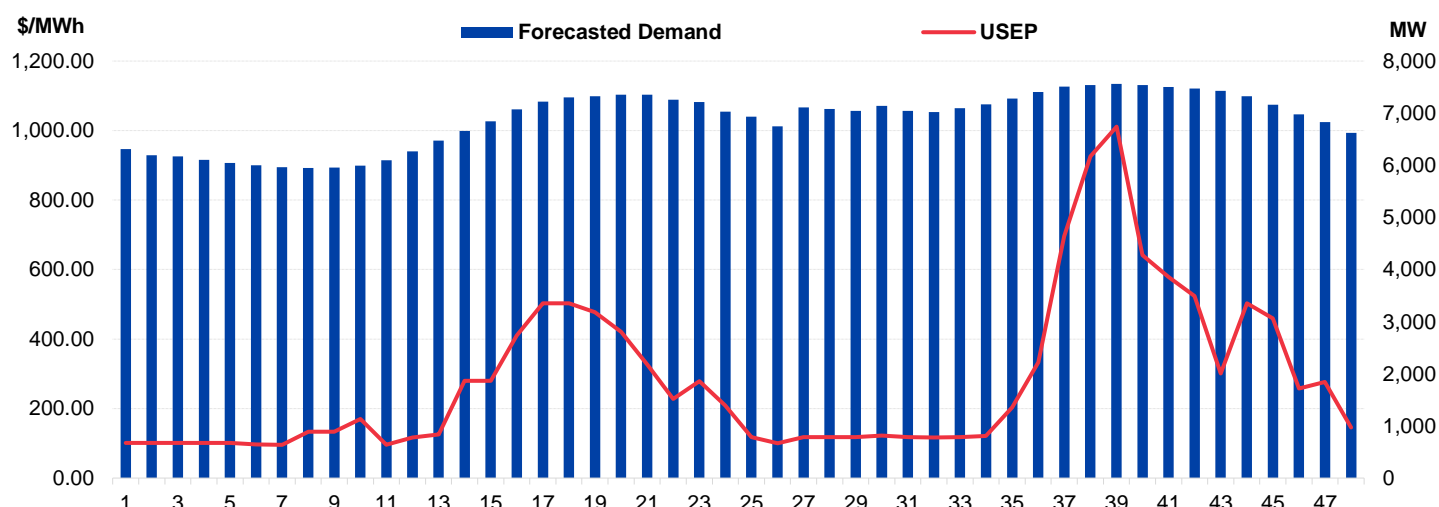
# Daily Trading Report

## 20 May 2025

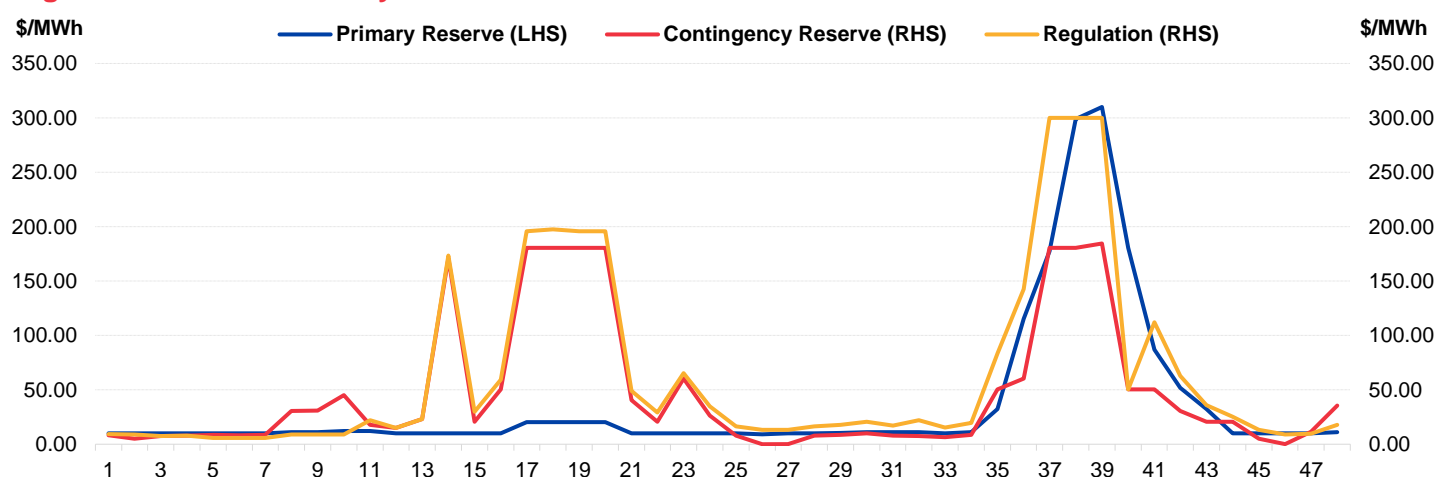


# Market Overview

**Figure 1: Forecasted Demand vs USEP**



**Figure 2: Periodic Ancillary Prices**



**Figure 3: Daily Data Comparison**

	Forecasted Demand (MW)	Total Supply (MW)	Energy Price (\$/MWh)
Weekday Ranking*	17 out of 5616	2382 out of 5616	360 out of 5616
Daily Average	6,890	7,506	279.27
Previous day	6,808	7,799	118.73
Change (%)	1.2%	-3.8%	135.2%
Daily Max	7,561	7,743	1,011.25
Previous day	7,470	8,263	280.27
Change (%)	1.2%	-6.3%	260.8%
Daily Min	5,948	7,159	95.93
Previous day	5,805	7,198	92.64
Change (%)	2.5%	-0.5%	3.6%

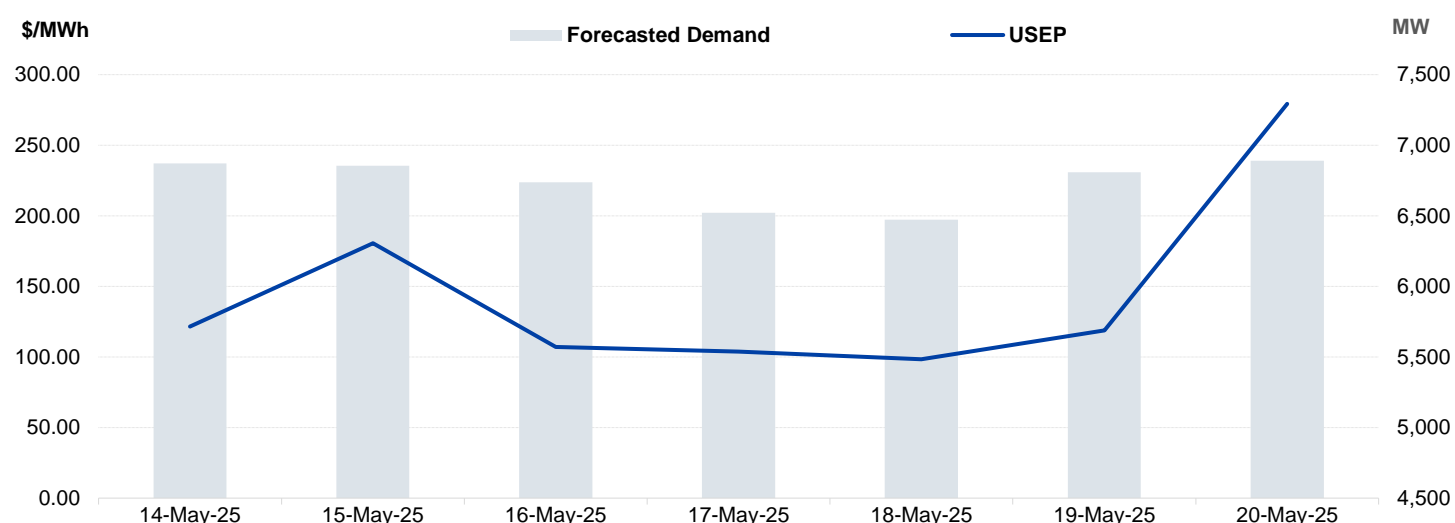
  

	Primary Reserve Price (\$/MWh)	Contingency Reserve Price (\$/MWh)	Regulation Price (\$/MWh)
Daily Average	35.98	47.38	62.48
Previous day	4.16	11.71	12.80
Change (%)	764.9%	304.6%	388.1%
Daily Max	310.00	184.50	300.00
Previous day	9.99	49.04	61.38
Change (%)	3003.1%	276.2%	388.8%
Daily Min	9.09	0.01	5.77
Previous day	0.05	1.17	5.02
Change (%)	18080.0%	-99.1%	14.9%

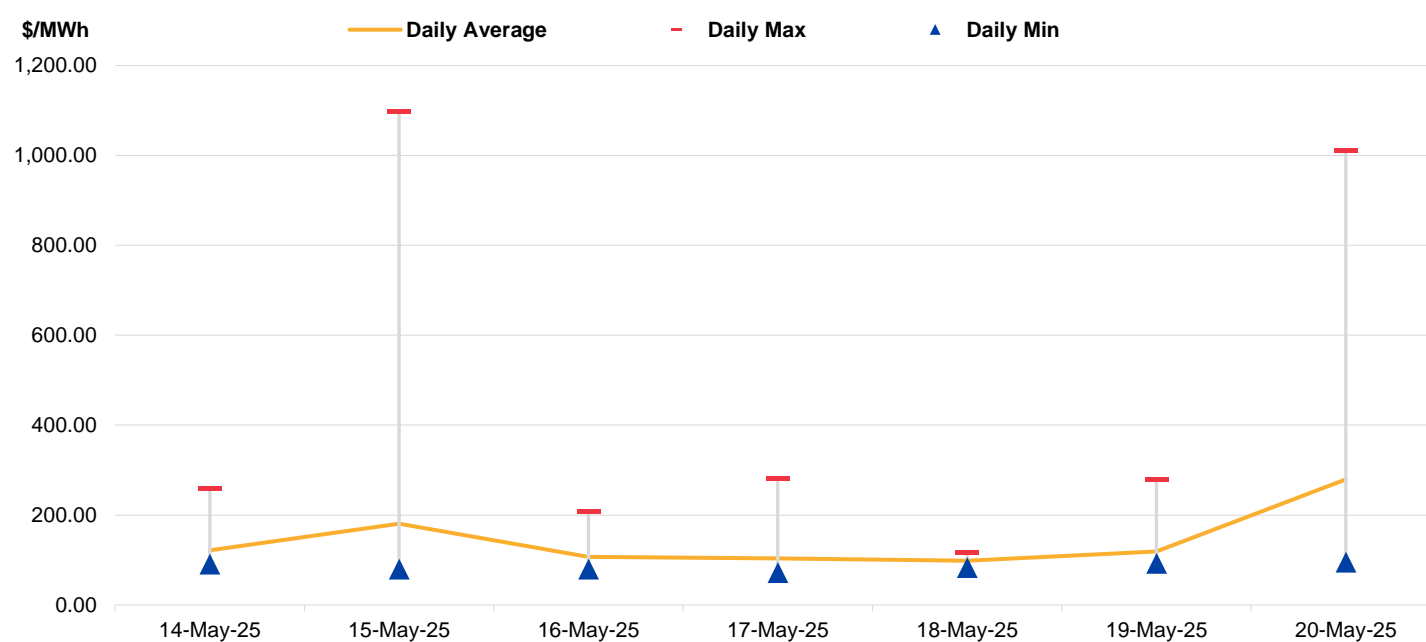
\*Ranking denotes the relative position of the market parameter since 1 Jan 2003.

# Market Overview

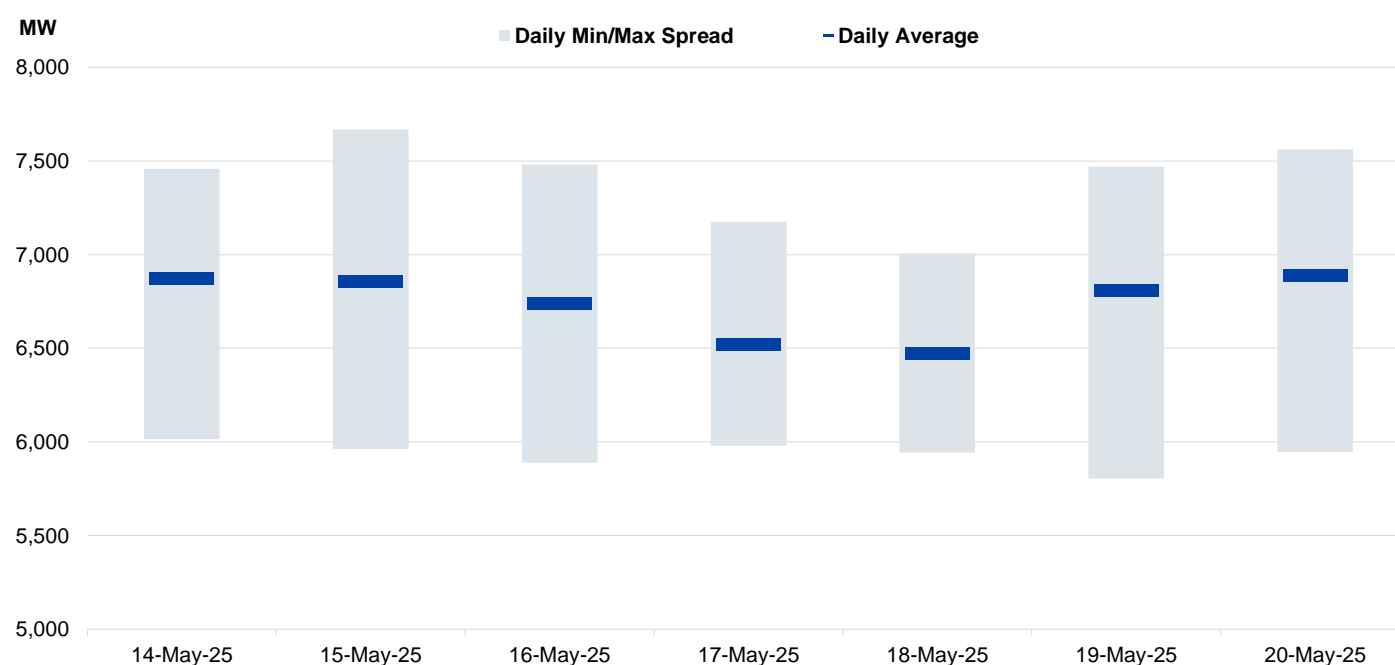
**Figure 4: Seven Days of Daily USEP vs Daily Forecasted Demand**



**Figure 5: Seven Days USEP Average-Max-Min**

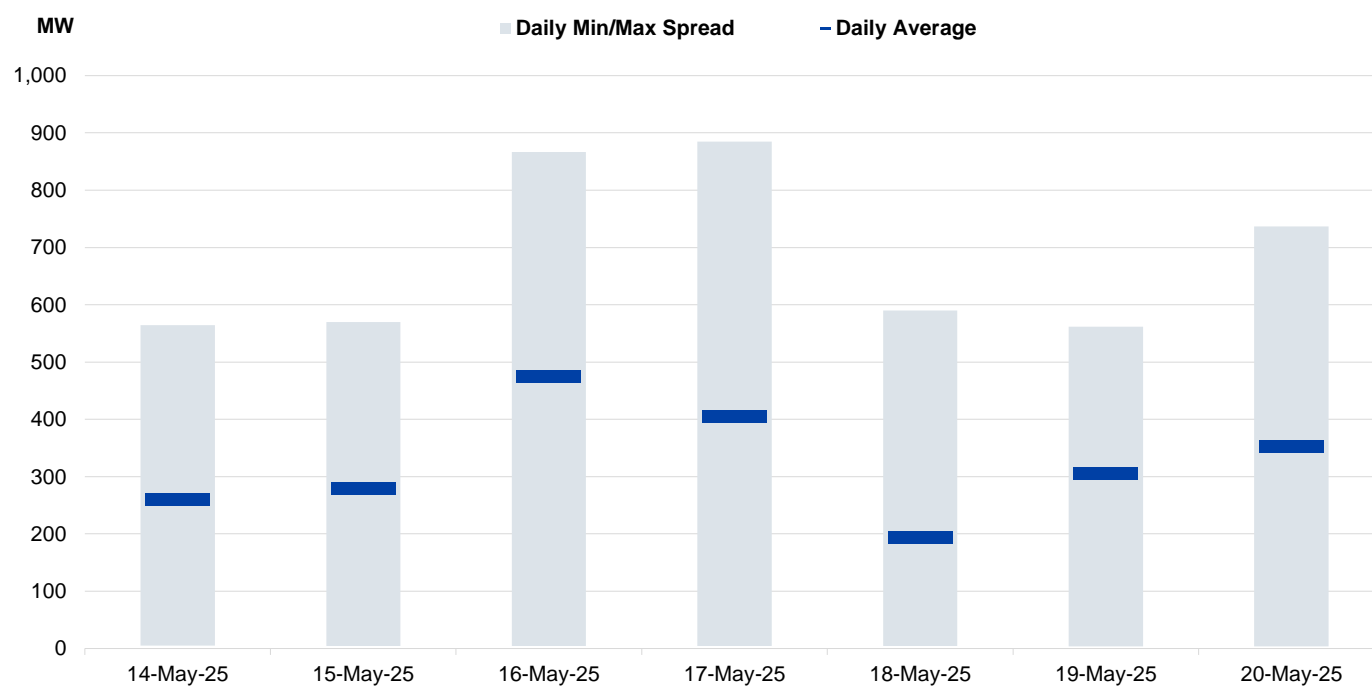


**Figure 6: Seven Days Forecasted Demand Average-Max-Min**



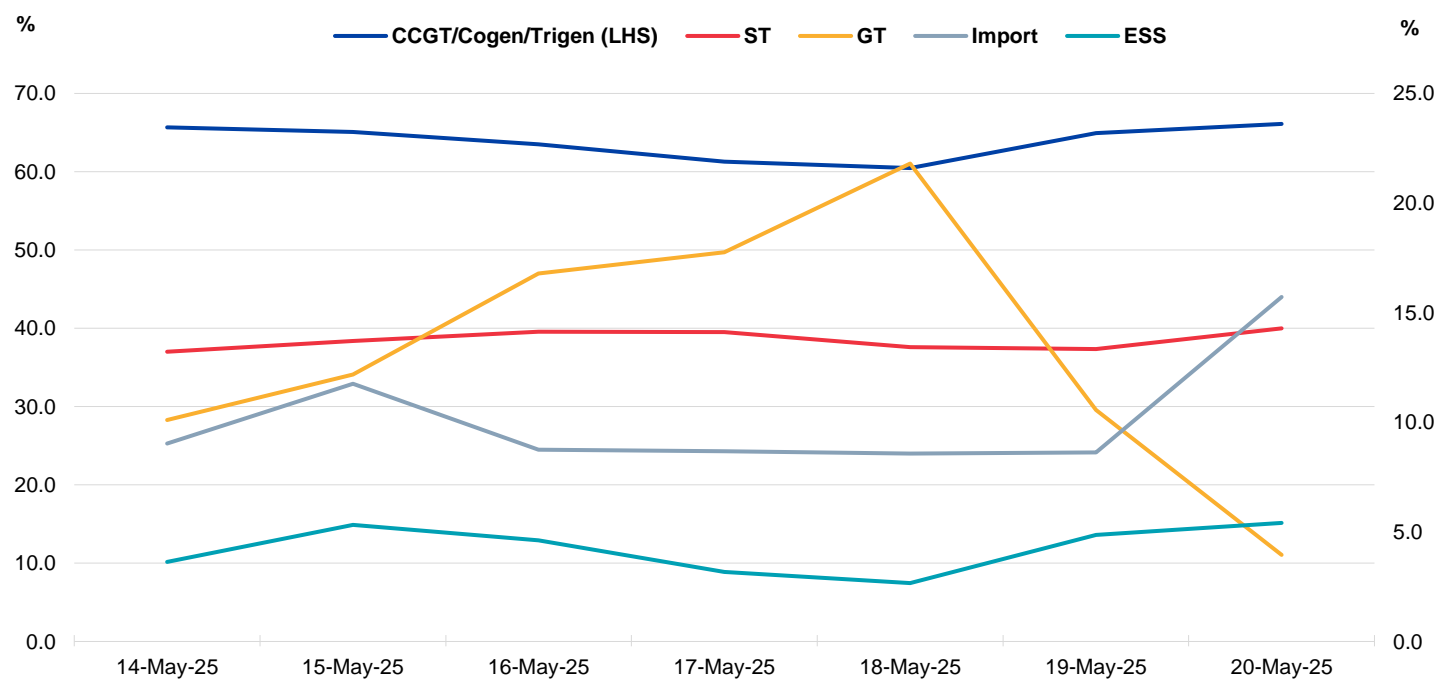
# Market Overview

**Figure 7: Seven Days Forecasted Solar Average-Max-Min**



Notes: Figure 7 reflects the daily forecasted solar for periods between 15 and 38 for the past seven days.

**Figure 8: Daily Generation Plant Utilization Rate**



# Market Overview

**Figure 9: Daily Trading Data Table**

	Wed 14-May-25	Thu 15-May-25	Fri 16-May-25	Sat 17-May-25	Sun 18-May-25	Mon 19-May-25	Tue 20-May-25
<b>Forecasted Demand (MW)</b>							
Daily Average	6,872	6,854	6,736	6,520	6,471	6,808	6,890
Daily Maximum	7,458	7,669	7,482	7,175	7,007	7,470	7,561
Daily Minimum	6,015	5,962	5,889	5,980	5,943	5,805	5,948
<b>Forecasted Solar (MW)</b>							
Daily Average	260	279	474	405	193	305	352
Daily Maximum	565	570	867	885	590	562	737
Daily Minimum	5	5	4	5	4	4	4
<b>Total Supply (MW)</b>							
Daily Average	7,895	7,936	7,986	7,648	7,636	7,799	7,506
Daily Maximum	8,224	8,227	8,320	8,017	7,883	8,263	7,743
Daily Minimum	7,479	7,661	7,487	7,215	7,371	7,198	7,159
<b>Energy Price (\$/MWh)</b>							
Daily Average	121.50	180.44	107.12	103.77	98.37	118.73	279.27
Daily Maximum	258.63	1098.52	207.53	280.59	117.27	280.27	1011.25
Daily Minimum	91.53	80.00	80.36	72.16	83.11	92.64	95.93
<b>Reserve &amp; Regulation Prices (\$/MWh)</b>							
Primary	6.24	2.03	2.82	2.80	9.92	4.16	35.98
Contingency	13.75	32.94	10.81	14.35	8.90	11.71	47.38
Regulation	14.84	34.46	10.84	16.95	11.58	12.80	62.48
<b>Reserve &amp; Regulation Requirement (MW)</b>							
Primary	167	159	170	179	180	170	174
Contingency	412	404	409	415	412	412	418
Regulation	108	106	108	108	108	108	108
<b>Generation (MW)</b>							
CCGT/Cogen/Trigen	6,634	6,576	6,417	6,192	6,109	6,561	6,679
ST	133	138	142	142	135	134	144
GT	105	127	175	185	227	110	41
Import	32	41	31	30	30	30	55
ESS	8	11	10	7	6	10	11

Notes: Figure 9 reflects the daily forecasted solar for periods between 15 and 38.

Daily Trading Report

Trading Date: Tuesday, 20 May 2025

Page 4 of 6

# Periodic Trading Data

Figure 10: Periodic Trading Data Table

Period	USEP (\$/MWh)	Forecasted Demand (MW)	Forecasted Solar (MW)	RUSEP (\$/MWh)	MAP (\$/MWh)	MAPT (\$/MWh)	TPC Applied
1	\$101.13	6,312	0	\$101.13	\$118.84	\$545.91	No
2	\$100.87	6,195	0	\$100.87	\$118.98	\$545.91	No
3	\$100.86	6,170	0	\$100.86	\$119.14	\$545.91	No
4	\$100.85	6,103	0	\$100.85	\$119.30	\$545.91	No
5	\$100.86	6,046	0	\$100.86	\$119.46	\$545.91	No
6	\$96.25	6,001	0	\$96.25	\$119.53	\$545.91	No
7	\$96.12	5,962	0	\$96.12	\$119.60	\$545.91	No
8	\$133.23	5,948	0	\$133.23	\$120.45	\$545.91	No
9	\$133.42	5,953	0	\$133.42	\$121.30	\$545.91	No
10	\$170.45	5,994	0	\$170.45	\$122.92	\$545.91	No
11	\$95.93	6,094	0	\$95.93	\$122.97	\$545.91	No
12	\$116.63	6,266	0	\$116.63	\$123.41	\$545.91	No
13	\$125.19	6,471	0	\$125.19	\$124.02	\$545.91	No
14	\$279.97	6,659	0	\$279.97	\$127.50	\$545.91	No
15	\$279.84	6,844	4	\$279.84	\$130.90	\$545.91	No
16	\$409.81	7,074	15	\$409.81	\$136.83	\$545.91	No
17	\$502.41	7,218	73	\$502.41	\$144.35	\$545.91	No
18	\$502.91	7,302	98	\$502.91	\$150.48	\$545.91	No
19	\$477.21	7,327	142	\$477.21	\$158.26	\$545.91	No
20	\$420.20	7,358	182	\$420.20	\$164.57	\$545.91	No
21	\$326.35	7,357	236	\$326.35	\$168.94	\$545.91	No
22	\$227.72	7,256	369	\$227.72	\$171.26	\$545.91	No
23	\$278.63	7,214	388	\$278.63	\$174.62	\$545.91	No
24	\$208.75	7,028	527	\$208.75	\$176.96	\$545.91	No
25	\$117.33	6,936	554	\$117.33	\$177.41	\$545.91	No
26	\$100.08	6,749	737	\$100.08	\$177.50	\$545.91	No
27	\$117.43	7,111	476	\$117.43	\$178.00	\$545.91	No
28	\$117.37	7,083	598	\$117.37	\$178.45	\$545.91	No
29	\$117.35	7,047	659	\$117.35	\$178.94	\$545.91	No
30	\$121.86	7,140	549	\$121.86	\$179.48	\$545.91	No
31	\$117.35	7,044	613	\$117.35	\$179.93	\$545.91	No
32	\$116.79	7,022	626	\$116.79	\$180.37	\$545.91	No
33	\$117.37	7,098	560	\$117.37	\$180.81	\$545.91	No
34	\$120.84	7,169	474	\$120.84	\$181.07	\$545.91	No
35	\$203.41	7,280	353	\$203.41	\$182.95	\$545.91	No
36	\$333.21	7,406	151	\$333.21	\$187.50	\$545.91	No
37	\$695.51	7,509	39	\$695.51	\$199.59	\$545.91	No
38	\$925.90	7,540	20	\$925.90	\$216.43	\$545.91	No
39	\$1,011.25	7,561	1	\$1,011.25	\$234.89	\$545.91	No
40	\$641.06	7,536	0	\$641.06	\$245.30	\$545.91	No
41	\$578.57	7,504	0	\$578.57	\$254.74	\$545.91	No
42	\$523.84	7,475	0	\$523.84	\$263.04	\$545.91	No
43	\$301.45	7,428	0	\$301.45	\$263.48	\$545.91	No
44	\$503.02	7,323	0	\$503.02	\$269.41	\$545.91	No
45	\$459.18	7,162	0	\$459.18	\$274.63	\$545.91	No
46	\$257.42	6,978	0	\$257.42	\$275.85	\$545.91	No
47	\$276.55	6,830	0	\$276.55	\$278.86	\$545.91	No
48	\$145.24	6,621	0	\$145.24	\$279.27	\$545.91	No

# Periodic Trading Data

**Figure 11 (cont'd): Periodic Trading Data Table**

Period	Generation (MW)				
	CCGT/Cogen/Trigen	ST	GT	Import	ESS
1	6,178	134	0	30	4
2	6,060	134	0	30	4
3	6,035	134	0	30	4
4	5,967	134	0	30	4
5	5,909	134	0	30	4
6	5,864	134	0	30	4
7	5,825	134	0	30	4
8	5,812	134	0	30	4
9	5,817	134	0	30	4
10	5,859	134	0	30	4
11	5,956	134	0	30	4
12	6,131	134	0	30	4
13	6,338	134	0	30	4
14	6,519	134	0	40	4
15	6,565	134	120	40	24
16	6,757	134	120	80	24
17	6,901	134	120	80	26
18	6,986	134	120	80	26
19	7,011	134	120	80	26
20	7,019	146	131	80	26
21	7,008	146	143	80	24
22	6,943	150	154	30	24
23	6,971	150	45	80	12
24	6,880	150	5	30	6
25	6,761	150	0	60	6
26	6,592	150	12	30	6
27	6,868	150	100	30	6
28	6,918	150	23	30	6
29	6,903	150	0	30	6
30	6,964	150	34	30	6
31	6,899	150	0	30	6
32	6,878	150	0	30	6
33	6,955	150	0	30	6
34	6,996	150	0	60	6
35	7,109	150	0	60	6
36	7,179	150	31	80	12
37	7,201	150	100	80	24
38	7,222	150	100	90	24
39	7,234	150	100	100	24
40	7,208	150	100	100	24
41	7,177	150	100	100	24
42	7,147	150	100	100	24
43	7,106	150	100	100	18
44	7,101	150	0	100	18
45	6,970	150	0	80	6
46	6,793	150	0	70	6
47	6,645	150	0	70	6
48	6,443	150	0	60	6

**Disclaimer**

This Report is prepared and provided for general information purposes only. Information in this Report was obtained or derived from sources that the Energy Market Company Pte Ltd (EMC) considers reliable. All reasonable care has been taken to ensure that stated facts are accurate and opinions fair and reasonable at time of printing. EMC does not represent that information in this Report is accurate or complete and it should not be relied upon as such. In particular, in presentation of charts, certain assumptions were made which may not be stated therein. As such, EMC assumes no fiduciary responsibility or liability for any construction or interpretation you may take based on the information contained nor for any consequences, financial or otherwise, from transactions where information in this Report may be relied upon. You should make your own appraisal and should consult, to the extent necessary, your own professional advisors to ensure that any decision made based on the information in this Report is suitable for your circumstances. If you have any specific queries about this Report or its contents, you should contact us at [marketoperations-B@emcsg.com](mailto:marketoperations-B@emcsg.com).