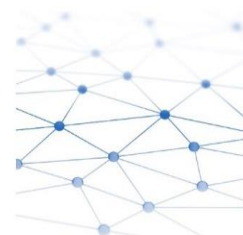
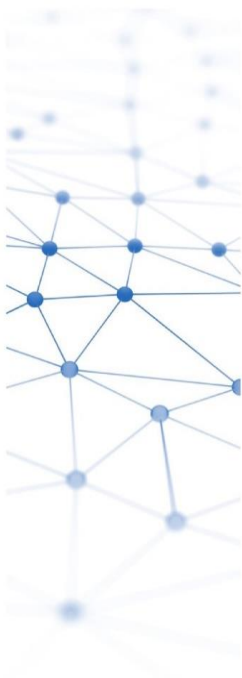


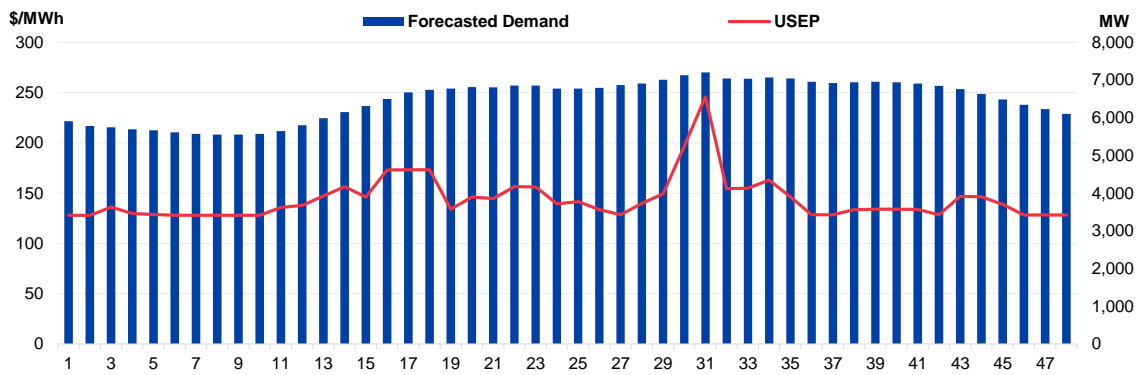
# Daily Trading Report

## 22 September 2023

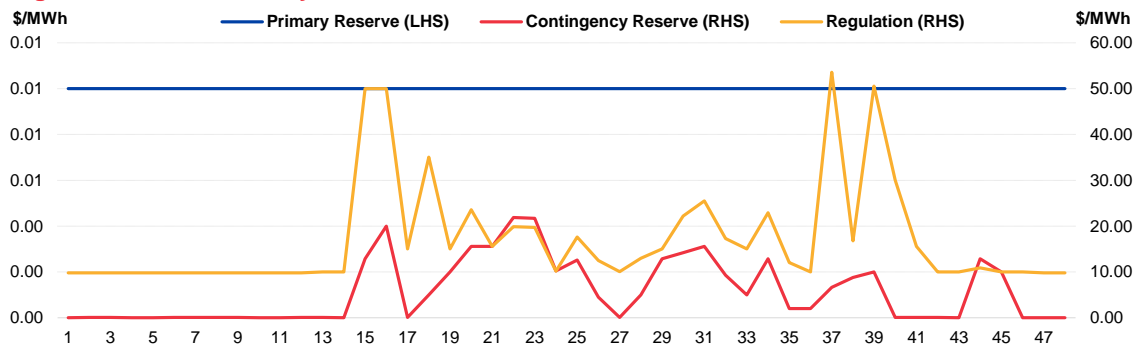


# Market Overview

**Figure 1: Forecasted Demand vs USEP**



**Figure 2: Periodic Ancillary Prices**



**Figure 3: Daily Data Comparison**

	Forecasted Demand (MW)	Total Supply (MW)	Energy Price (\$/MWh)
Weekday Ranking*	197 out of 5203	2534 out of 5203	1989 out of 5203
Daily Average	6,486	7,222	143.83
Previous day	6,482	6,914	185.08
Change (%)	0.1%	4.5%	-22.3%
Daily Max	7,203	7,674	245.85
Previous day	7,081	7,368	471.77
Change (%)	1.7%	4.2%	-47.9%
Daily Min	5,554	6,584	127.94
Previous day	5,556	6,079	131.61
Change (%)	0.0%	8.3%	-2.8%

	Primary Reserve Price (\$/MWh)	Contingency Reserve Price (\$/MWh)	Regulation Price (\$/MWh)
Daily Average	0.01	5.80	17.12
Previous day	0.01	37.13	67.21
Change (%)	0.0%	-84.4%	-74.5%
Daily Max	0.01	21.88	53.57
Previous day	0.02	180.44	300.00
Change (%)	-50.0%	-87.9%	-82.1%
Daily Min	0.01	0.01	9.80
Previous day	0.01	0.01	10.00
Change (%)	0.0%	0.0%	-2.0%

\*Ranking denotes the relative position of the market parameter since 1 Jan 2003.

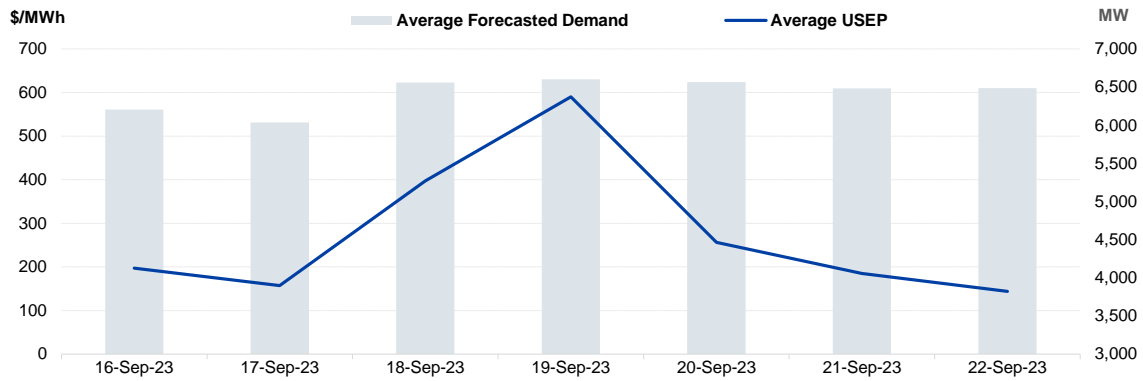
Daily Trading Report

Trading Date: Friday, 22 September 2023

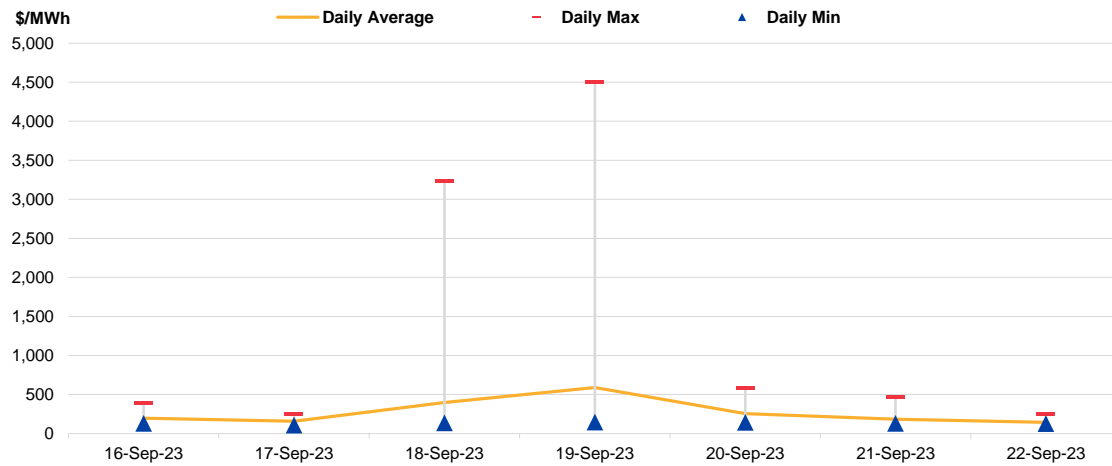
Page 1 of 4

# Market Overview

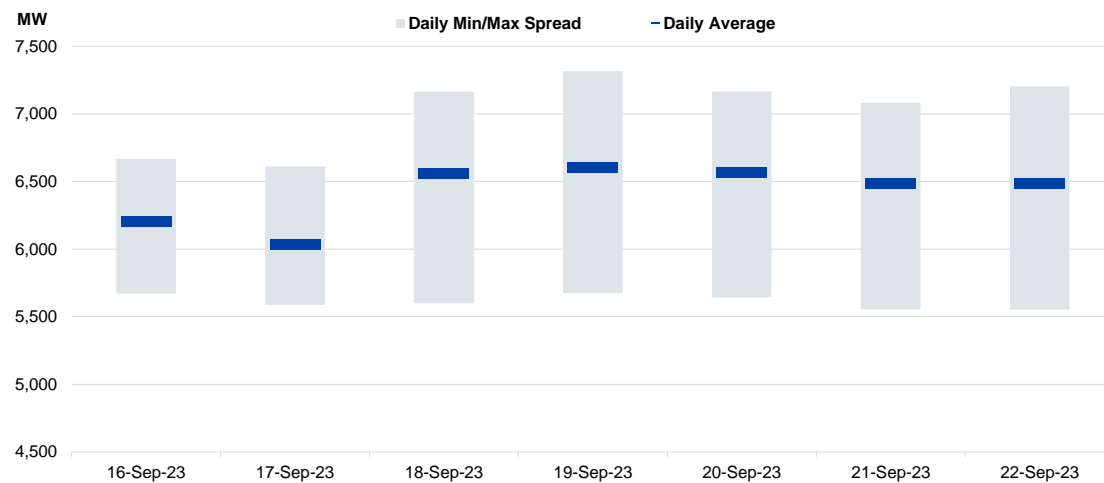
**Figure 4: Seven Days of Daily USEP vs Daily Forecasted Demand**



**Figure 5: Seven Days USEP Average-Max-Min**

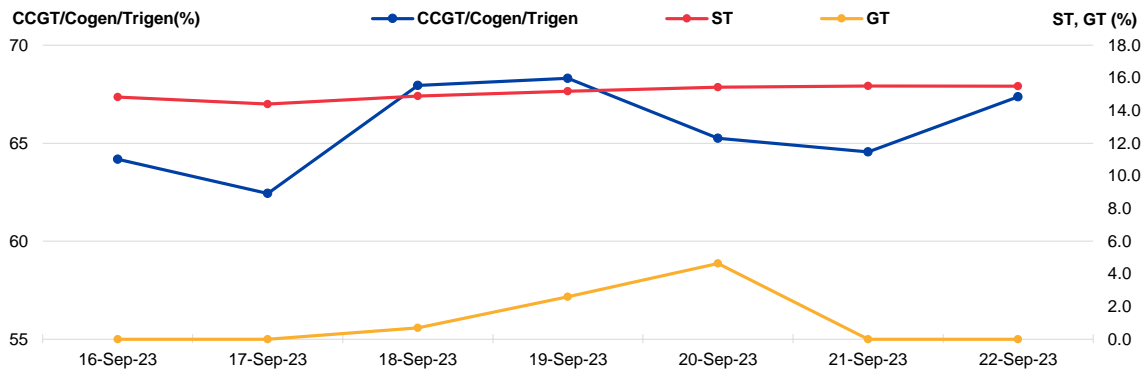


**Figure 6: Seven Days Forecasted Demand Average-Max-Min**



# Market Overview

**Figure 7: Daily Generation Plant Utilization Rate**



**Figure 8: Daily Trading Data Table**

	Sat 16-Sep-23	Sun 17-Sep-23	Mon 18-Sep-23	Tue 19-Sep-23	Wed 20-Sep-23	Thu 21-Sep-23	Fri 22-Sep-23
<b>Forecasted Demand (MW)</b>							
Daily Average	6,204	6,035	6,559	6,601	6,565	6,482	6,486
Daily Maximum	6,667	6,611	7,163	7,317	7,165	7,081	7,203
Daily Minimum	5,671	5,589	5,599	5,674	5,643	5,556	5,554
<b>Total Supply (MW)</b>							
Daily Average	6,808	6,807	7,073	7,068	7,027	6,914	7,222
Daily Maximum	7,139	7,159	7,323	7,331	7,389	7,368	7,674
Daily Minimum	6,335	6,333	6,504	6,483	6,380	6,079	6,584
<b>Energy Price (\$/MWh)</b>							
Daily Average	197.29	157.34	397.41	590.08	256.25	185.08	143.83
Daily Maximum	394.85	245.46	3236.05	4500.00	584.01	471.77	245.85
Daily Minimum	131.25	108.41	139.91	147.21	144.00	131.61	127.94
<b>Reserve &amp; Regulation Prices (\$/MWh)</b>							
Primary	0.19	0.09	3.00	1.12	0.91	0.01	0.01
Contingency	38.56	22.19	25.45	39.32	42.71	37.13	5.80
Regulation	48.10	36.28	40.31	37.86	24.12	67.21	17.12
<b>Reserve &amp; Regulation Requirement (MW)</b>							
Primary	183	184	171	162	165	159	161
Contingency	402	397	404	398	400	393	392
Regulation	117	117	117	117	117	117	117
<b>Generation (MW)</b>							
CCGT/Cogen/Trigen	6,098	5,931	6,455	6,490	6,441	6,372	6,375
ST	134	130	135	137	140	140	140
GT	0	0	1	5	8	0	0
Import	0	0	0	0	0	0	0

# Periodic Trading Data

Figure 9: Periodic Trading Data Table

Period	USEP (\$/MWh)	Forecasted Demand (MW)	CCGT Generation (MW)	ST Generation (MW)	GT Generation (MW)	Import Generation (MW)	RUSEP (\$/MWh)	MAP (\$/MWh)	MAPT (\$/MWh)	TPC Applied
1	\$128.15	5,913	5,800	141	0	0	\$128.15	\$184.80	\$584.01	No
2	\$127.94	5,786	5,672	141	0	0	\$127.94	\$184.59	\$584.01	No
3	\$136.01	5,750	5,636	141	0	0	\$136.01	\$184.56	\$584.01	No
4	\$129.72	5,693	5,578	141	0	0	\$129.72	\$184.39	\$584.01	No
5	\$128.89	5,666	5,551	141	0	0	\$128.89	\$184.21	\$584.01	No
6	\$128.09	5,618	5,502	141	0	0	\$128.09	\$184.01	\$584.01	No
7	\$128.09	5,574	5,458	141	0	0	\$128.09	\$183.81	\$584.01	No
8	\$128.04	5,555	5,439	141	0	0	\$128.04	\$183.61	\$584.01	No
9	\$128.04	5,554	5,437	141	0	0	\$128.04	\$183.42	\$584.01	No
10	\$128.04	5,576	5,459	141	0	0	\$128.04	\$183.22	\$584.01	No
11	\$135.97	5,647	5,530	141	0	0	\$135.97	\$183.18	\$584.01	No
12	\$137.96	5,800	5,685	141	0	0	\$137.96	\$183.16	\$584.01	No
13	\$147.23	5,992	5,879	141	0	0	\$147.23	\$183.36	\$584.01	No
14	\$156.41	6,148	6,037	141	0	0	\$156.41	\$183.70	\$584.01	No
15	\$146.17	6,311	6,194	141	0	0	\$146.17	\$183.88	\$584.01	No
16	\$173.17	6,502	6,386	141	0	0	\$173.17	\$184.62	\$584.01	No
17	\$173.23	6,676	6,562	141	0	0	\$173.23	\$185.35	\$584.01	No
18	\$173.24	6,740	6,627	141	0	0	\$173.24	\$186.00	\$584.01	No
19	\$134.01	6,776	6,668	141	0	0	\$134.01	\$185.92	\$584.01	No
20	\$146.15	6,818	6,706	141	0	0	\$146.15	\$186.10	\$584.01	No
21	\$144.70	6,811	6,698	141	0	0	\$144.70	\$186.24	\$584.01	No
22	\$156.43	6,856	6,744	141	0	0	\$156.43	\$186.63	\$584.01	No
23	\$156.26	6,854	6,742	141	0	0	\$156.26	\$187.14	\$584.01	No
24	\$139.37	6,778	6,672	141	0	0	\$139.37	\$187.30	\$584.01	No
25	\$141.74	6,772	6,665	140	0	0	\$141.74	\$187.38	\$584.01	No
26	\$133.55	6,798	6,693	140	0	0	\$133.55	\$187.30	\$584.01	No
27	\$128.48	6,871	6,768	140	0	0	\$128.48	\$187.10	\$584.01	No
28	\$139.76	6,910	6,807	140	0	0	\$139.76	\$187.15	\$584.01	No
29	\$149.37	7,009	6,902	140	0	0	\$149.37	\$187.39	\$584.01	No
30	\$196.46	7,133	7,027	140	0	0	\$196.46	\$188.61	\$584.01	No
31	\$245.85	7,203	7,098	140	0	0	\$245.85	\$190.25	\$584.01	No
32	\$154.57	7,041	6,933	140	0	0	\$154.57	\$190.60	\$584.01	No
33	\$154.84	7,035	6,927	140	0	0	\$154.84	\$190.57	\$584.01	No
34	\$163.10	7,073	6,965	140	0	0	\$163.10	\$187.78	\$584.01	No
35	\$146.50	7,041	6,934	140	0	0	\$146.50	\$182.45	\$584.01	No
36	\$128.46	6,955	6,853	140	0	0	\$128.46	\$177.31	\$584.01	No
37	\$128.45	6,924	6,821	140	0	0	\$128.45	\$172.94	\$584.01	No
38	\$133.66	6,940	6,837	140	0	0	\$133.66	\$166.10	\$584.01	No
39	\$134.16	6,956	6,853	140	0	0	\$134.16	\$159.07	\$584.01	No
40	\$133.98	6,941	6,838	140	0	0	\$133.98	\$153.93	\$584.01	No
41	\$133.96	6,909	6,805	140	0	0	\$133.96	\$147.50	\$584.01	No
42	\$128.43	6,848	6,744	140	0	0	\$128.43	\$145.69	\$584.01	No
43	\$146.98	6,760	6,648	140	0	0	\$146.98	\$144.93	\$584.01	No
44	\$146.29	6,636	6,523	140	0	0	\$146.29	\$145.11	\$584.01	No
45	\$138.86	6,483	6,375	140	0	0	\$138.86	\$144.08	\$584.01	No
46	\$128.37	6,344	6,234	140	0	0	\$128.37	\$143.97	\$584.01	No
47	\$128.34	6,230	6,119	140	0	0	\$128.34	\$143.90	\$584.01	No
48	\$128.33	6,106	5,993	140	0	0	\$128.33	\$143.83	\$584.01	No

## Disclaimer

This Report is prepared and provided for general information purposes only. Information in this Report was obtained or derived from sources that the Energy Market Company Pte Ltd (EMC) considers reliable. All reasonable care has been taken to ensure that stated facts are accurate and opinions fair and reasonable at time of printing. EMC does not represent that information in this Report is accurate or complete and it should not be relied upon as such. In particular, in presentation of charts, certain assumptions were made which may not be stated therein. As such, EMC assumes no fiduciary responsibility or liability for any construction or interpretation you may take based on the information contained nor for any consequences, financial or otherwise, from transactions where information in this Report may be relied upon. You should make your own appraisal and should consult, to the extent necessary, your own professional advisors to ensure that any decision made based on the information in this Report is suitable for your circumstances.

If you have any specific queries about this Report or its contents, you should contact us at [marketoperations-B@emcsg.com](mailto:marketoperations-B@emcsg.com).