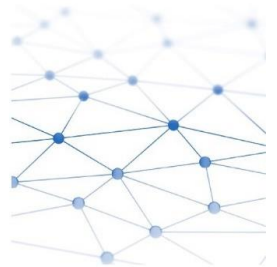
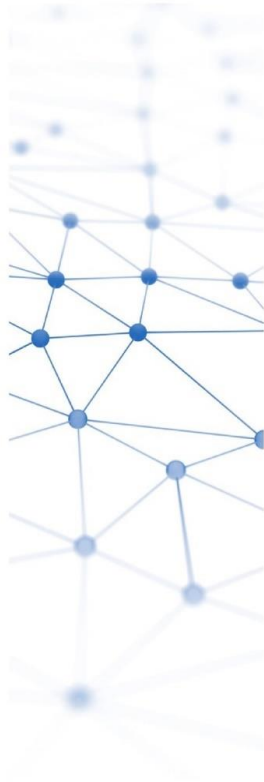


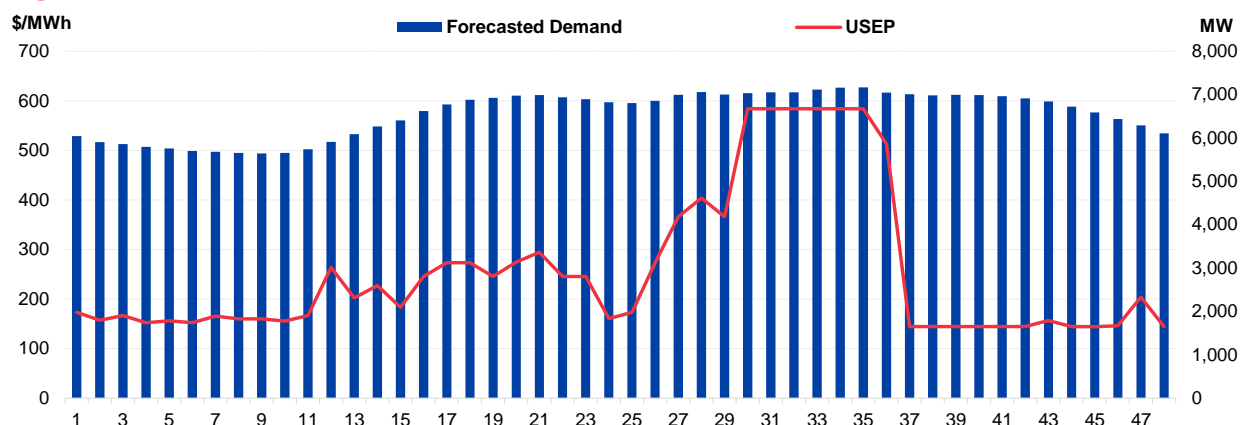
# Daily Trading Report

## 20 September 2023

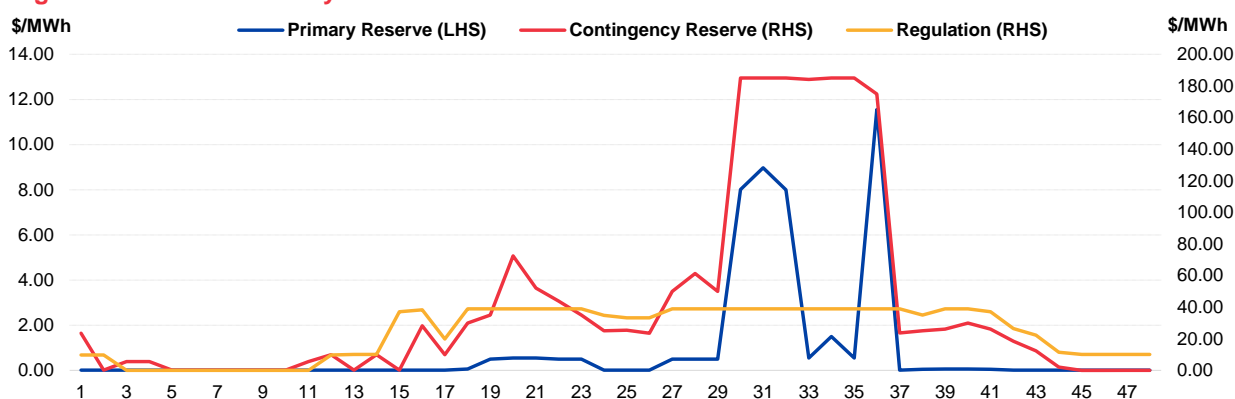


# Market Overview

**Figure 1: Forecasted Demand vs USEP**



**Figure 2: Periodic Ancillary Prices**



**Figure 3: Daily Data Comparison**

	Forecasted Demand (MW)	Total Supply (MW)	Energy Price (\$/MWh)
Weekday Ranking*	108 out of 5201	2786 out of 5201	436 out of 5201
Daily Average	6,565	7,027	256.25
Previous day	6,601	7,068	590.08
Change (%)	-0.5%	-0.6%	-56.6%
Daily Max	7,165	7,389	584.01
Previous day	7,317	7,331	4500.00
Change (%)	-2.1%	0.8%	-87.0%
Daily Min	5,643	6,380	144.00
Previous day	5,674	6,483	147.21
Change (%)	-0.5%	-1.6%	-2.2%

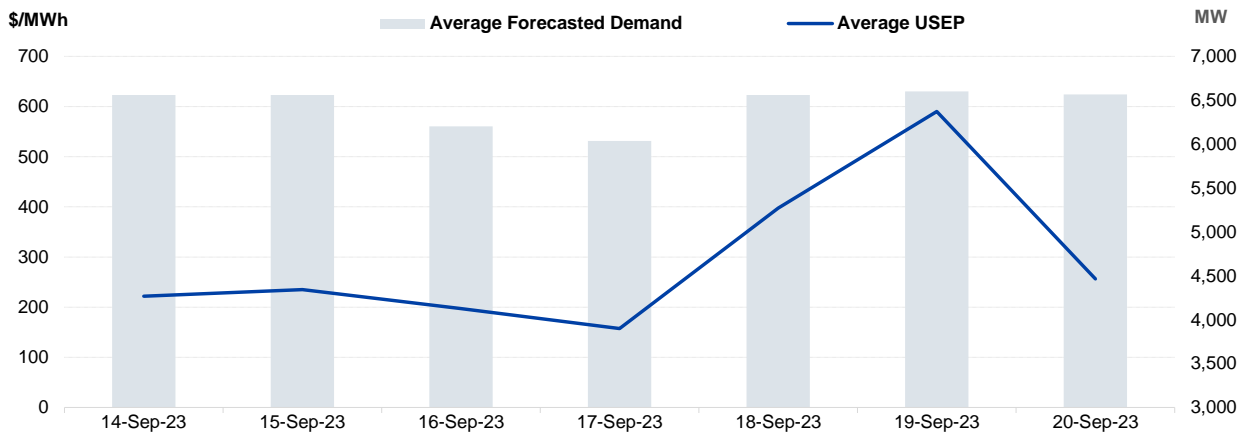
  

	Primary Reserve Price (\$/MWh)	Contingency Reserve Price (\$/MWh)	Regulation Price (\$/MWh)
Daily Average	0.91	42.71	24.12
Previous day	1.12	39.32	37.86
Change (%)	-18.8%	8.6%	-36.3%
Daily Max	11.55	185.00	38.93
Previous day	18.79	185.00	206.98
Change (%)	-38.5%	0.0%	-81.2%
Daily Min	0.01	0.01	0.01
Previous day	0.01	0.01	0.01
Change (%)	0.0%	0.0%	0.0%

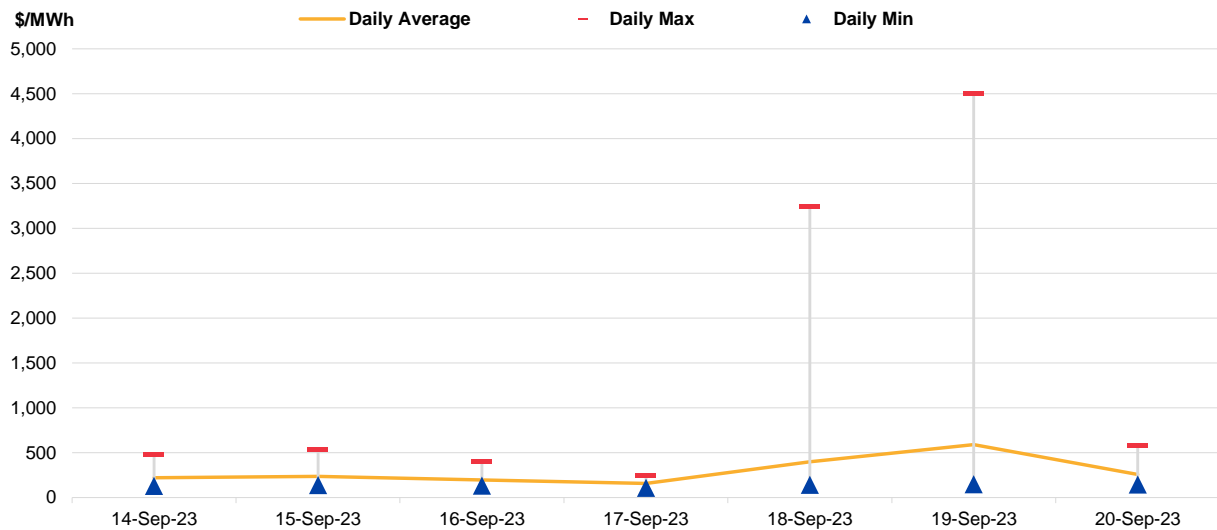
\*Ranking denotes the relative position of the market parameter since 1 Jan 2003.

# Market Overview

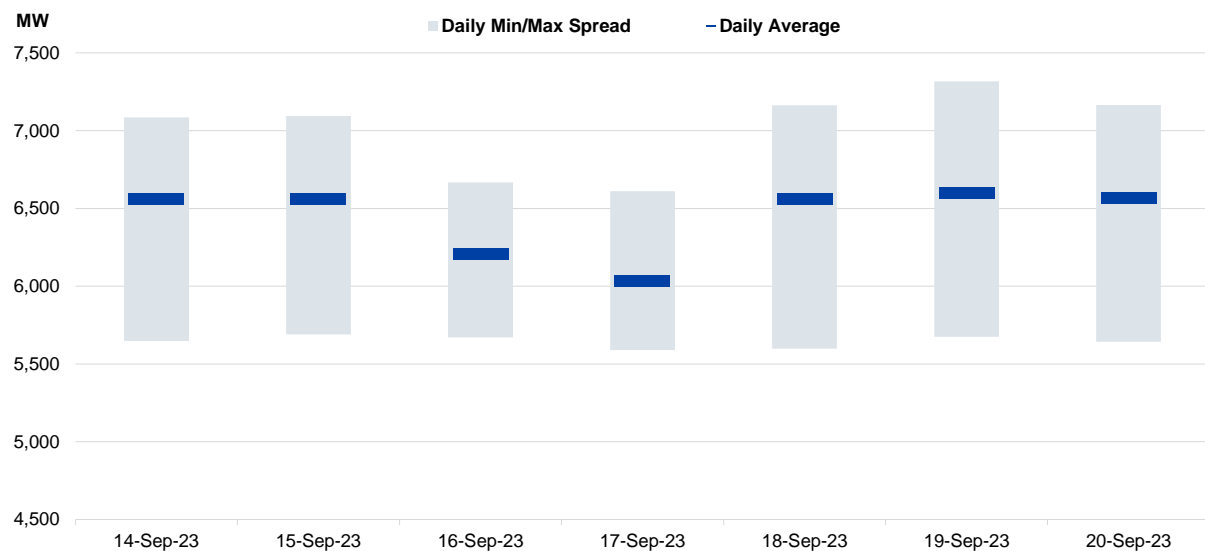
**Figure 4: Seven Days of Daily USEP vs Daily Forecasted Demand**



**Figure 5: Seven Days USEP Average-Max-Min**

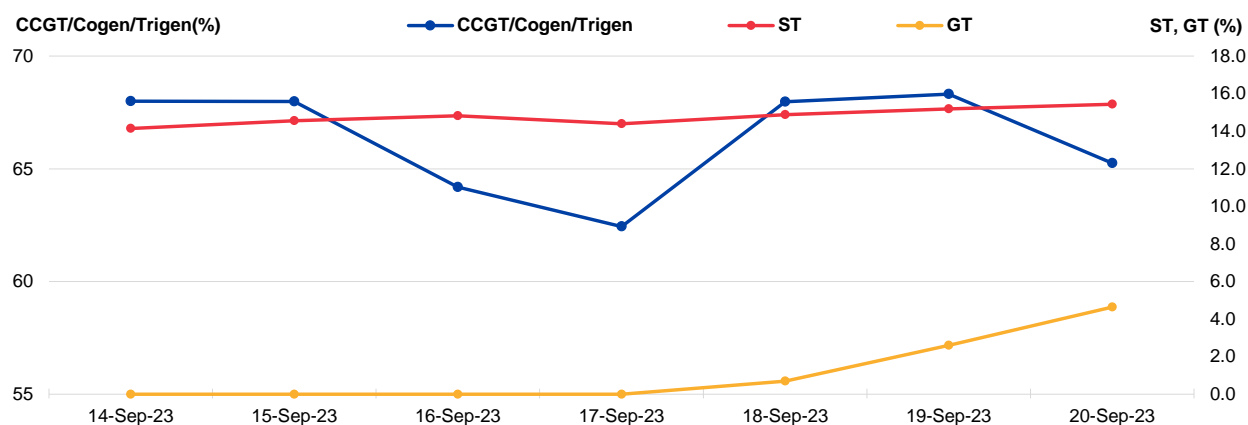


**Figure 6: Seven Days Forecasted Demand Average-Max-Min**



# Market Overview

**Figure 7: Daily Generation Plant Utilization Rate**



**Figure 8: Daily Trading Data Table**

	Thu 14-Sep-23	Fri 15-Sep-23	Sat 16-Sep-23	Sun 17-Sep-23	Mon 18-Sep-23	Tue 19-Sep-23	Wed 20-Sep-23
<b>Forecasted Demand (MW)</b>							
Daily Average	6,559	6,559	6,204	6,035	6,561	6,601	6,565
Daily Maximum	7,085	7,093	6,667	6,611	7,163	7,317	7,165
Daily Minimum	5,647	5,690	5,671	5,589	5,599	5,674	5,643
<b>Total Supply (MW)</b>							
Daily Average	7,138	7,082	6,808	6,807	7,073	7,068	7,027
Daily Maximum	7,368	7,367	7,139	7,159	7,323	7,331	7,389
Daily Minimum	6,601	6,446	6,335	6,333	6,504	6,483	6,380
<b>Energy Price (\$/MWh)</b>							
Daily Average	221.74	234.87	197.29	157.34	397.44	590.08	256.25
Daily Maximum	472.28	537.08	394.85	245.46	3236.05	4500.00	584.01
Daily Minimum	127.86	137.78	131.25	108.41	139.91	147.21	144.00
<b>Reserve &amp; Regulation Prices (\$/MWh)</b>							
Primary	1.20	1.09	0.19	0.09	3.00	1.12	0.91
Contingency	5.76	8.93	38.56	22.19	25.50	39.32	42.71
Regulation	25.20	32.07	48.10	36.28	40.31	37.86	24.12
<b>Reserve &amp; Regulation Requirement (MW)</b>							
Primary	166	164	183	184	171	162	165
Contingency	398	396	402	397	404	398	400
Regulation	117	117	117	117	117	117	117
<b>Generation (MW)</b>							
CCGT/Cogen/Trigen	6,460	6,459	6,098	5,931	6,457	6,490	6,441
ST	128	132	134	130	135	137	140
GT	0	0	0	0	1	5	8
Import	0	0	0	0	0	0	0

# Periodic Trading Data

Figure 9: Periodic Trading Data Table

Period	USEP (\$/MWh)	Forecasted Demand (MW)	CCGT Generation (MW)	ST Generation (MW)	GT Generation (MW)	Import Generation (MW)	RUSEP (\$/MWh)	MAP (\$/MWh)	MAPT (\$/MWh)	TPC Applied
1	\$173.14	6,043	5,933	140	0	0	\$173.14	\$646.99	\$584.01	Yes
2	\$157.13	5,902	5,790	140	0	0	\$157.13	\$646.39	\$584.01	Yes
3	\$166.53	5,858	5,746	140	0	0	\$166.53	\$646.47	\$584.01	Yes
4	\$152.12	5,793	5,681	140	0	0	\$152.12	\$646.25	\$584.01	Yes
5	\$156.10	5,760	5,647	140	0	0	\$156.10	\$646.11	\$584.01	Yes
6	\$151.97	5,698	5,585	140	0	0	\$151.97	\$646.13	\$584.01	Yes
7	\$165.42	5,682	5,568	140	0	0	\$165.42	\$646.50	\$584.01	Yes
8	\$159.97	5,656	5,541	140	0	0	\$159.97	\$646.76	\$584.01	Yes
9	\$159.97	5,643	5,529	140	0	0	\$159.97	\$647.03	\$584.01	Yes
10	\$155.58	5,653	5,539	140	0	0	\$155.58	\$647.13	\$584.01	Yes
11	\$166.39	5,739	5,625	140	0	0	\$166.39	\$646.66	\$584.01	Yes
12	\$264.00	5,907	5,795	140	0	0	\$264.00	\$647.06	\$584.01	Yes
13	\$202.10	6,089	5,978	140	0	0	\$202.10	\$645.57	\$584.01	Yes
14	\$227.04	6,263	6,154	140	0	0	\$227.04	\$642.69	\$584.01	Yes
15	\$183.08	6,409	6,293	140	0	0	\$183.08	\$640.80	\$584.01	Yes
16	\$245.35	6,621	6,507	140	0	0	\$245.35	\$639.12	\$584.01	Yes
17	\$273.11	6,777	6,665	140	0	0	\$273.11	\$638.50	\$584.01	Yes
18	\$273.12	6,879	6,768	140	0	0	\$273.12	\$636.43	\$584.01	Yes
19	\$245.42	6,928	6,818	140	0	0	\$245.42	\$634.20	\$584.01	Yes
20	\$274.20	6,975	6,866	140	0	0	\$274.20	\$632.30	\$584.01	Yes
21	\$294.15	6,987	6,878	140	0	0	\$294.15	\$630.83	\$584.01	Yes
22	\$245.45	6,938	6,828	140	0	0	\$245.45	\$629.81	\$584.01	Yes
23	\$245.41	6,896	6,786	140	0	0	\$245.41	\$630.47	\$584.01	Yes
24	\$160.58	6,824	6,713	140	0	0	\$160.58	\$629.79	\$584.01	Yes
25	\$173.25	6,807	6,695	140	0	0	\$173.25	\$629.18	\$584.01	Yes
26	\$273.10	6,856	6,745	140	0	0	\$273.10	\$629.18	\$584.01	Yes
27	\$365.90	6,998	6,890	140	0	0	\$365.90	\$629.04	\$584.01	Yes
28	\$403.72	7,059	6,952	140	0	0	\$403.72	\$628.91	\$584.01	Yes
29	\$365.89	7,002	6,894	140	0	0	\$365.89	\$628.16	\$584.01	Yes
30	\$584.01	7,035	6,774	140	70	0	\$4,500.00	\$716.22	\$584.01	Yes
31	\$584.01	7,055	6,824	140	70	0	\$4,500.00	\$803.84	\$584.01	Yes
32	\$584.01	7,056	6,794	140	70	0	\$4,500.00	\$831.24	\$584.01	Yes
33	\$584.01	7,115	6,894	140	70	0	\$4,500.00	\$831.24	\$584.01	Yes
34	\$584.01	7,164	6,919	140	70	0	\$4,500.00	\$831.24	\$584.01	Yes
35	\$584.01	7,165	7,011	140	51	0	\$3,336.83	\$831.10	\$584.01	Yes
36	\$513.32	7,050	6,947	140	0	0	\$513.32	\$774.38	\$584.01	Yes
37	\$144.10	7,008	6,903	140	0	0	\$144.10	\$763.28	\$584.01	Yes
38	\$144.07	6,980	6,876	140	0	0	\$144.07	\$755.83	\$584.01	Yes
39	\$144.10	6,998	6,895	140	0	0	\$144.10	\$748.65	\$584.01	Yes
40	\$144.10	6,991	6,888	140	0	0	\$144.10	\$743.09	\$584.01	Yes
41	\$144.09	6,964	6,861	140	0	0	\$144.09	\$738.28	\$584.01	Yes
42	\$144.09	6,915	6,811	140	0	0	\$144.09	\$733.47	\$584.01	Yes
43	\$156.66	6,843	6,740	140	0	0	\$156.66	\$729.12	\$584.01	Yes
44	\$144.13	6,721	6,617	140	0	0	\$144.13	\$726.41	\$584.01	Yes
45	\$144.00	6,587	6,481	140	0	0	\$144.00	\$724.30	\$584.01	Yes
46	\$146.00	6,437	6,331	140	0	0	\$146.00	\$723.43	\$584.01	Yes
47	\$204.04	6,292	6,184	140	0	0	\$204.04	\$722.39	\$584.01	Yes
48	\$144.00	6,105	5,995	140	0	0	\$144.00	\$721.52	\$584.01	Yes

## Disclaimer

This Report is prepared and provided for general information purposes only. Information in this Report was obtained or derived from sources that the Energy Market Company Pte Ltd (EMC) considers reliable. All reasonable care has been taken to ensure that stated facts are accurate and opinions fair and reasonable at time of printing. EMC does not represent that information in this Report is accurate or complete and it should not be relied upon as such. In particular, in presentation of charts, certain assumptions were made which may not be stated therein. As such, EMC assumes no fiduciary responsibility or liability for any construction or interpretation you may take based on the information contained nor for any consequences, financial or otherwise, from transactions where information in this Report may be relied upon. You should make your own appraisal and should consult, to the extent necessary, your own professional advisors to ensure that any decision made based on the information in this Report is suitable for your circumstances.

If you have any specific queries about this Report or its contents, you should contact us at [marketoperations-B@emcsg.com](mailto:marketoperations-B@emcsg.com).