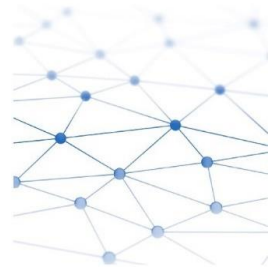
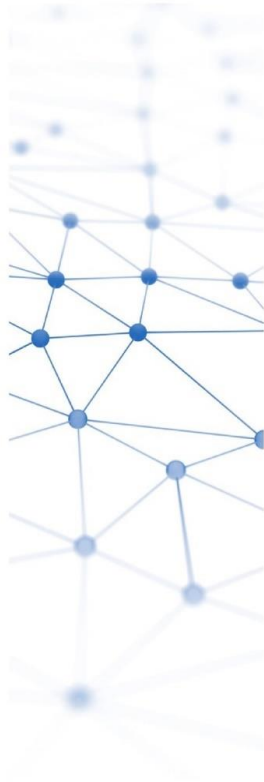


Daily Trading Report

16 September 2023



Market Overview

Figure 1: Forecasted Demand vs USEP

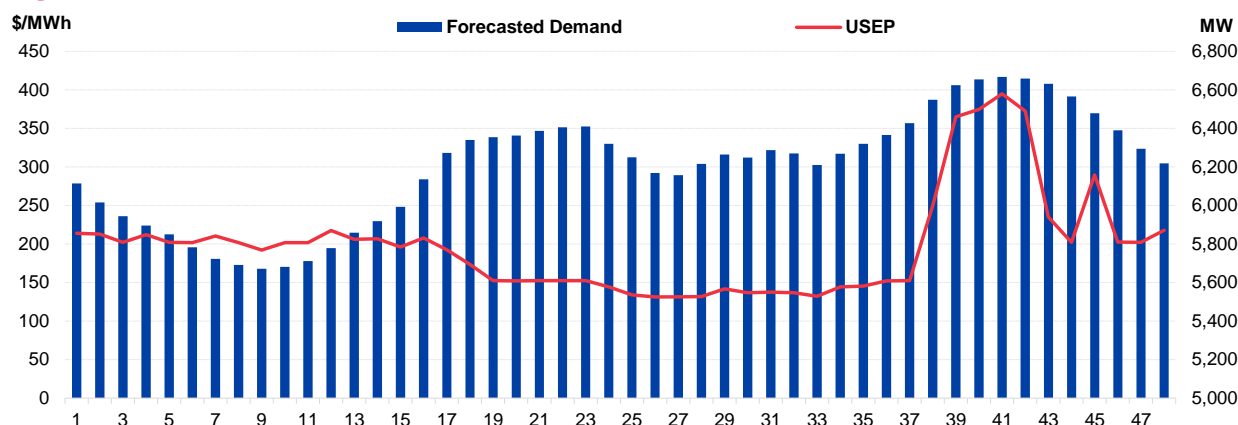


Figure 2: Periodic Ancillary Prices

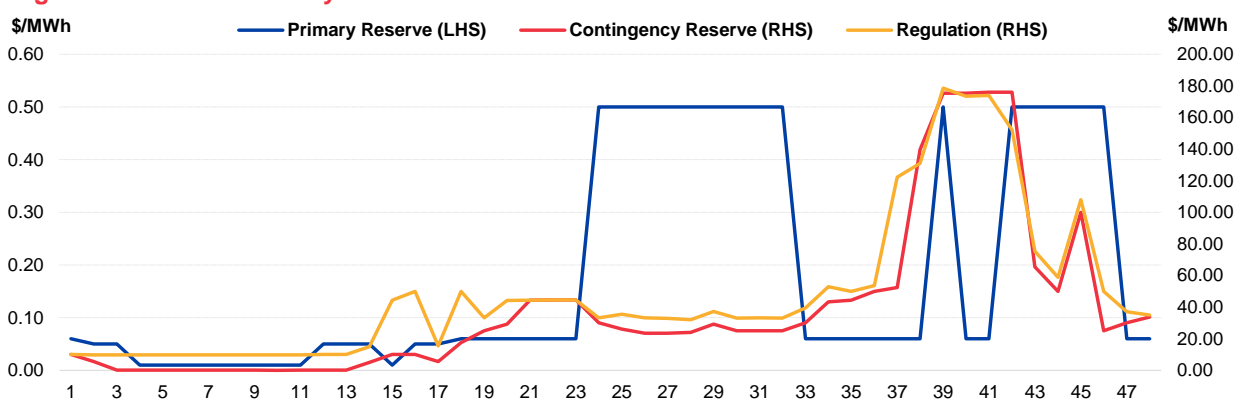


Figure 3: Daily Data Comparison

	Forecasted Demand (MW)	Total Supply (MW)	Energy Price (\$/MWh)
Saturday Ranking*	23 out of 1053	519 out of 1053	169 out of 1053
Daily Average	6,204	6,808	197.29
Previous day	6,559	7,082	234.87
Change (%)	-5.4%	-3.9%	-16.0%
Daily Max	6,667	7,139	394.85
Previous day	7,093	7,367	537.08
Change (%)	-6.0%	-3.1%	-26.5%
Daily Min	5,671	6,335	131.25
Previous day	5,690	6,446	137.78
Change (%)	-0.3%	-1.7%	-4.7%

	Primary Reserve Price (\$/MWh)	Contingency Reserve Price (\$/MWh)	Regulation Price (\$/MWh)
Daily Average	0.19	38.56	48.10
Previous day	1.09	8.93	32.07
Change (%)	-82.6%	331.6%	50.0%
Daily Max	0.50	176.00	178.57
Previous day	11.12	50.00	124.44
Change (%)	-95.5%	252.0%	43.5%
Daily Min	0.01	0.01	9.80
Previous day	0.01	0.01	9.80
Change (%)	0.0%	0.0%	0.0%

*Ranking denotes the relative position of the market parameter since 1 Jan 2003.

Market Overview

Figure 4: Seven Days of Daily USEP vs Daily Forecasted Demand

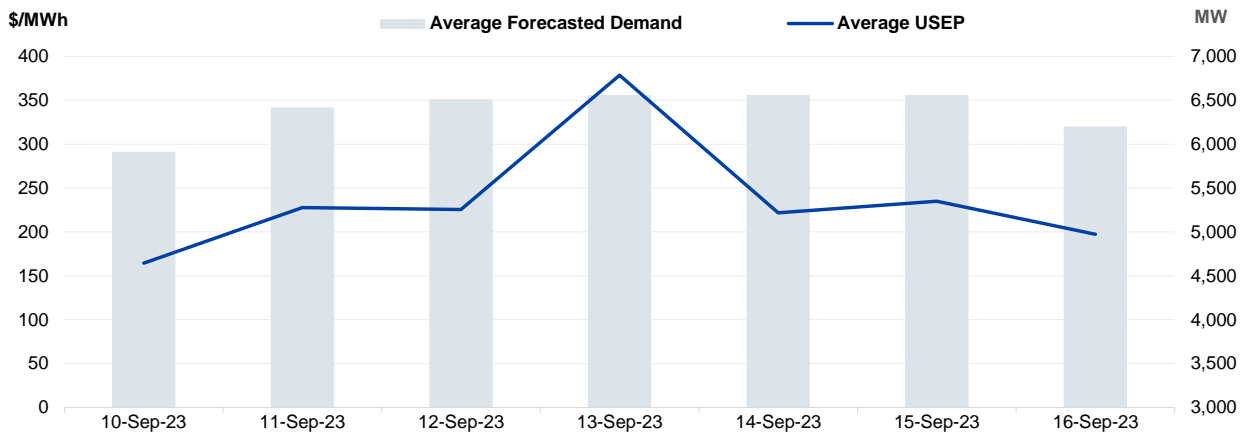


Figure 5: Seven Days USEP Average-Max-Min

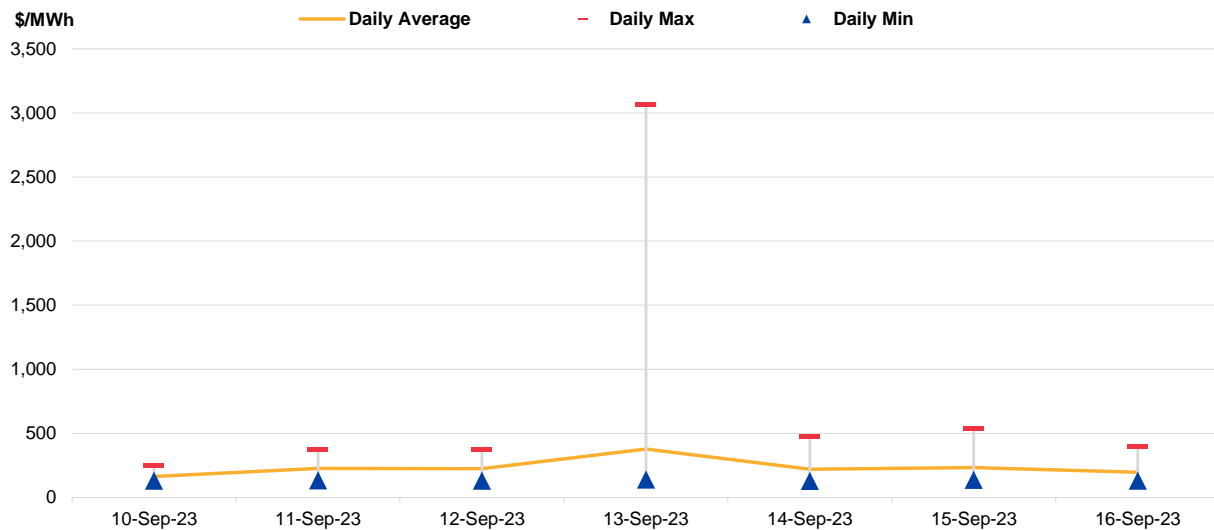
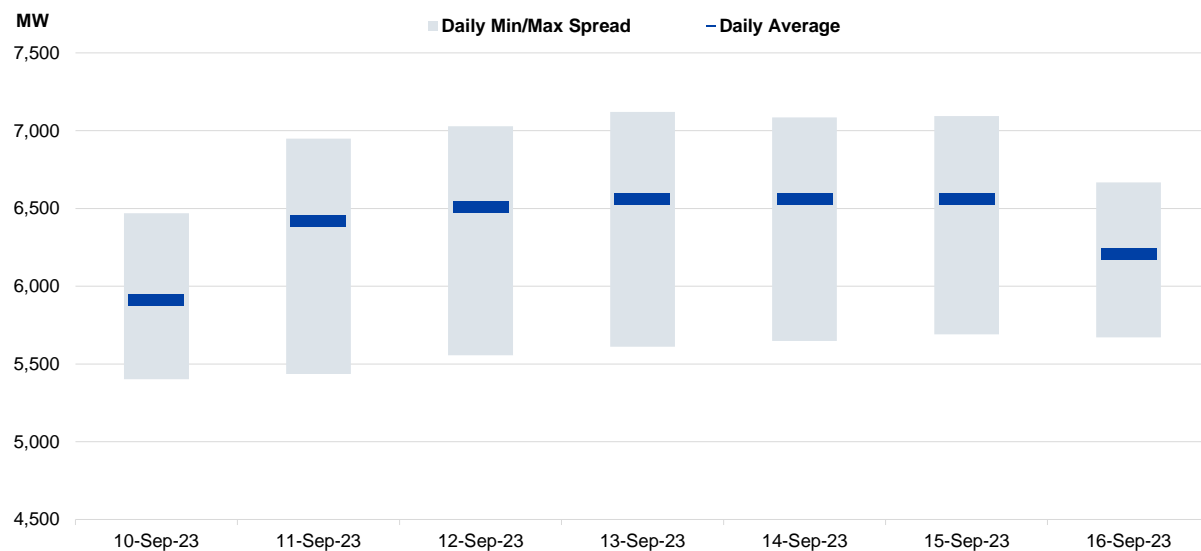


Figure 6: Seven Days Forecasted Demand Average-Max-Min



Market Overview

Figure 7: Daily Generation Plant Utilization Rate

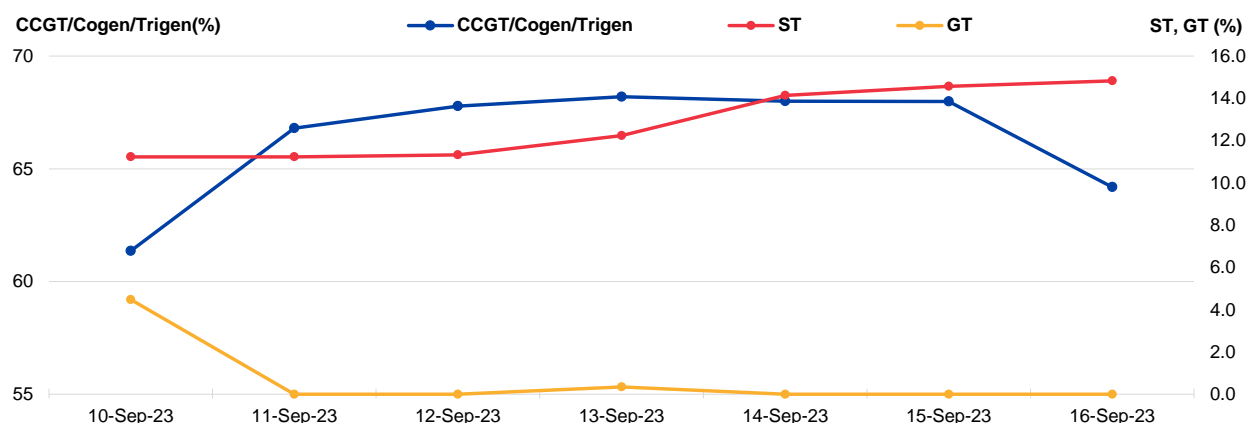


Figure 8: Daily Trading Data Table

	Sun 10-Sep-23	Mon 11-Sep-23	Tue 12-Sep-23	Wed 13-Sep-23	Thu 14-Sep-23	Fri 15-Sep-23	Sat 16-Sep-23
Forecasted Demand (MW)							
Daily Average	5,914	6,418	6,512	6,559	6,559	6,559	6,204
Daily Maximum	6,469	6,949	7,028	7,120	7,085	7,093	6,667
Daily Minimum	5,403	5,435	5,555	5,610	5,647	5,690	5,671
Total Supply (MW)							
Daily Average	6,530	6,918	7,036	7,037	7,138	7,082	6,808
Daily Maximum	6,788	7,255	7,351	7,446	7,368	7,367	7,139
Daily Minimum	6,168	6,183	6,288	6,327	6,601	6,446	6,335
Energy Price (\$/MWh)							
Daily Average	164.41	227.85	225.50	378.57	221.74	234.87	197.29
Daily Maximum	245.40	372.48	374.45	3066.80	472.28	537.08	394.85
Daily Minimum	131.31	132.31	131.28	138.88	127.86	137.78	131.25
Reserve & Regulation Prices (\$/MWh)							
Primary	0.34	0.45	1.56	6.52	1.20	1.09	0.19
Contingency	7.03	81.48	16.55	35.83	5.76	8.93	38.56
Regulation	27.06	82.51	28.78	51.98	25.20	32.07	48.10
Reserve & Regulation Requirement (MW)							
Primary	195	178	165	163	166	164	183
Contingency	404	408	395	395	398	396	402
Regulation	117	117	117	117	117	117	117
Generation (MW)							
CCGT/Cogen/Trigen	5,829	6,346	6,439	6,479	6,460	6,459	6,098
ST	102	102	102	111	128	132	134
GT	8	0	0	1	0	0	0
Import	0	0	0	0	0	0	0

Periodic Trading Data

Figure 9: Periodic Trading Data Table

Period	USEP (\$/MWh)	Forecasted Demand (MW)	CCGT Generation (MW)	ST Generation (MW)	GT Generation (MW)	Import Generation (MW)	RUSEP (\$/MWh)	MAP (\$/MWh)	MAPT (\$/MWh)	TPC Applied
1	\$213.72	6,115	6,014	132	0	0	\$213.72	\$234.25	\$584.01	No
2	\$212.81	6,016	5,915	132	0	0	\$212.81	\$235.29	\$584.01	No
3	\$202.12	5,944	5,842	132	0	0	\$202.12	\$236.23	\$584.01	No
4	\$211.97	5,895	5,793	132	0	0	\$211.97	\$237.58	\$584.01	No
5	\$202.00	5,849	5,746	132	0	0	\$202.00	\$238.73	\$584.01	No
6	\$201.80	5,783	5,678	132	0	0	\$201.80	\$239.98	\$584.01	No
7	\$210.26	5,723	5,617	132	0	0	\$210.26	\$241.48	\$584.01	No
8	\$201.82	5,691	5,586	132	0	0	\$201.82	\$242.81	\$584.01	No
9	\$192.03	5,671	5,562	135	0	0	\$192.03	\$243.94	\$584.01	No
10	\$201.64	5,681	5,572	135	0	0	\$201.64	\$245.27	\$584.01	No
11	\$201.78	5,711	5,602	135	0	0	\$201.78	\$246.51	\$584.01	No
12	\$217.57	5,778	5,670	135	0	0	\$217.57	\$245.98	\$584.01	No
13	\$206.10	5,859	5,751	135	0	0	\$206.10	\$246.47	\$584.01	No
14	\$206.59	5,919	5,812	135	0	0	\$206.59	\$246.65	\$584.01	No
15	\$196.08	5,993	5,879	135	0	0	\$196.08	\$247.13	\$584.01	No
16	\$207.67	6,136	6,024	135	0	0	\$207.67	\$246.96	\$584.01	No
17	\$192.27	6,273	6,162	135	0	0	\$192.27	\$246.20	\$584.01	No
18	\$173.46	6,340	6,230	135	0	0	\$173.46	\$244.41	\$584.01	No
19	\$152.33	6,353	6,243	135	0	0	\$152.33	\$243.04	\$584.01	No
20	\$152.21	6,363	6,252	135	0	0	\$152.21	\$241.10	\$584.01	No
21	\$152.36	6,387	6,278	135	0	0	\$152.36	\$239.16	\$584.01	No
22	\$152.51	6,406	6,297	135	0	0	\$152.51	\$237.57	\$584.01	No
23	\$152.50	6,410	6,301	135	0	0	\$152.50	\$237.14	\$584.01	No
24	\$144.11	6,320	6,209	135	0	0	\$144.11	\$237.12	\$584.01	No
25	\$133.89	6,249	6,144	135	0	0	\$133.89	\$236.53	\$584.01	No
26	\$131.25	6,169	6,063	135	0	0	\$131.25	\$235.66	\$584.01	No
27	\$131.28	6,157	6,051	135	0	0	\$131.28	\$234.73	\$584.01	No
28	\$131.75	6,215	6,110	135	0	0	\$131.75	\$234.33	\$584.01	No
29	\$141.75	6,264	6,156	135	0	0	\$141.75	\$234.32	\$584.01	No
30	\$136.82	6,249	6,144	135	0	0	\$136.82	\$233.57	\$584.01	No
31	\$137.35	6,287	6,182	135	0	0	\$137.35	\$231.31	\$584.01	No
32	\$136.80	6,270	6,165	135	0	0	\$136.80	\$228.44	\$584.01	No
33	\$132.06	6,210	6,104	135	0	0	\$132.06	\$225.05	\$584.01	No
34	\$144.09	6,269	6,158	135	0	0	\$144.09	\$219.62	\$584.01	No
35	\$145.12	6,319	6,209	135	0	0	\$145.12	\$211.45	\$584.01	No
36	\$151.94	6,365	6,256	135	0	0	\$151.94	\$203.86	\$584.01	No
37	\$152.51	6,426	6,318	135	0	0	\$152.51	\$198.90	\$584.01	No
38	\$249.65	6,549	6,442	135	0	0	\$249.65	\$195.54	\$584.01	No
39	\$365.11	6,624	6,521	135	0	0	\$365.11	\$194.55	\$584.01	No
40	\$374.43	6,653	6,551	135	0	0	\$374.43	\$193.35	\$584.01	No
41	\$394.85	6,667	6,565	135	0	0	\$394.85	\$193.76	\$584.01	No
42	\$372.55	6,659	6,557	135	0	0	\$372.55	\$193.91	\$584.01	No
43	\$235.09	6,631	6,528	135	0	0	\$235.09	\$193.09	\$584.01	No
44	\$202.19	6,566	6,463	135	0	0	\$202.19	\$193.12	\$584.01	No
45	\$289.51	6,479	6,376	135	0	0	\$289.51	\$194.91	\$584.01	No
46	\$202.32	6,390	6,285	135	0	0	\$202.32	\$195.74	\$584.01	No
47	\$202.17	6,294	6,188	135	0	0	\$202.17	\$196.14	\$584.01	No
48	\$217.88	6,219	6,113	135	0	0	\$217.88	\$197.29	\$584.01	No

Disclaimer

This Report is prepared and provided for general information purposes only. Information in this Report was obtained or derived from sources that the Energy Market Company Pte Ltd (EMC) considers reliable. All reasonable care has been taken to ensure that stated facts are accurate and opinions fair and reasonable at time of printing. EMC does not represent that information in this Report is accurate or complete and it should not be relied upon as such. In particular, in presentation of charts, certain assumptions were made which may not be stated therein. As such, EMC assumes no fiduciary responsibility or liability for any construction or interpretation you may take based on the information contained nor for any consequences, financial or otherwise, from transactions where information in this Report may be relied upon. You should make your own appraisal and should consult, to the extent necessary, your own professional advisors to ensure that any decision made based on the information in this Report is suitable for your circumstances.

If you have any specific queries about this Report or its contents, you should contact us at marketoperations-B@emcsg.com.